

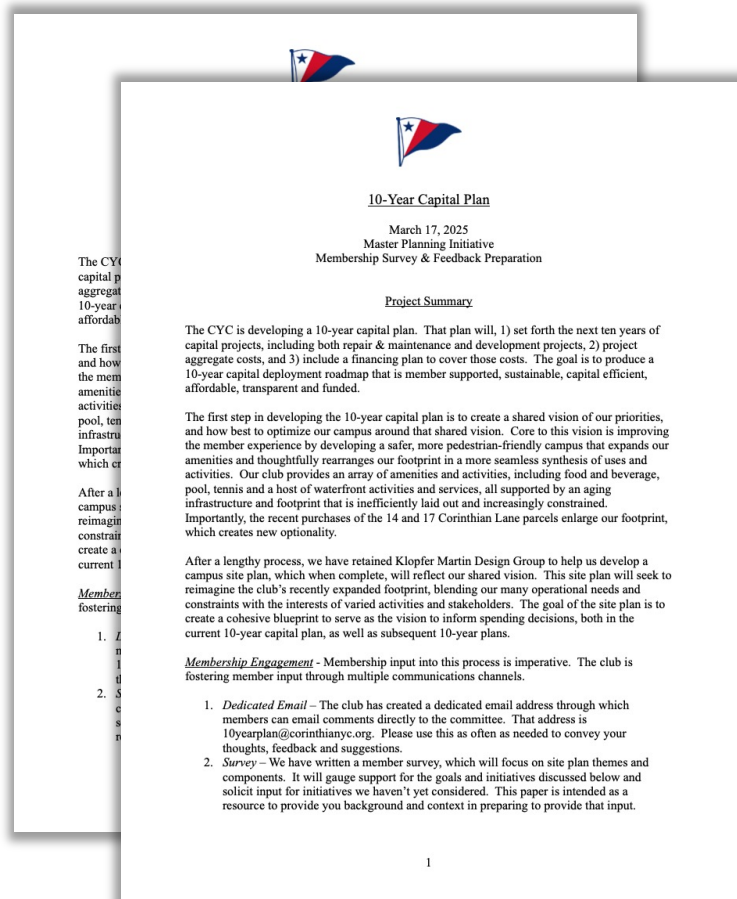


# **10-Year Plan: Member Survey Result** Corinthian Yacht Club

May 2025

# In March, the 10-Year Plan Committee shared their comprehensive campus assessment and **launched a survey to further gather membership feedback**

## Campus assessment 'white paper' (March 2025)



## 417 Members completed the survey, across a diverse set of responders

- **95%** of responders had **read the 'white paper'**
- Responders reflected a wide range of **club tenure**:
  - **43%** have been members for **20+ years**
  - **20%** have been members for **11-20 years**
  - **37%** have been with the club **<10 years**
- **71%** of responders **have a boat**:
  - **55%** have **power boats**
  - **23%** have **sailboats**
- **54%** of responders a part of **families with children**



# Three key themes emerged from the survey results, providing the 10-Year Plan Committee with useful direction as they progress forward

---



## Pool Deck and Locker Rooms

- Members list Pool/Swimming as their **#1 activity**
- Insufficient pool deck is a **Top 3 concern** among members and enlarging the pool deck is a **Top 4 development project** preference among members
- The Pool House locker rooms are the **3<sup>rd</sup> most used resource by members (2<sup>nd</sup> by children)**, and “**Inadequate pool locker rooms**” is a **Top 5 Concern** among member



## Parking

- Increasing available parking was the **#1 highest ranked potential development opportunity**
- Insufficient parking was the **#2 highest overall concern**



## Waterfront seating

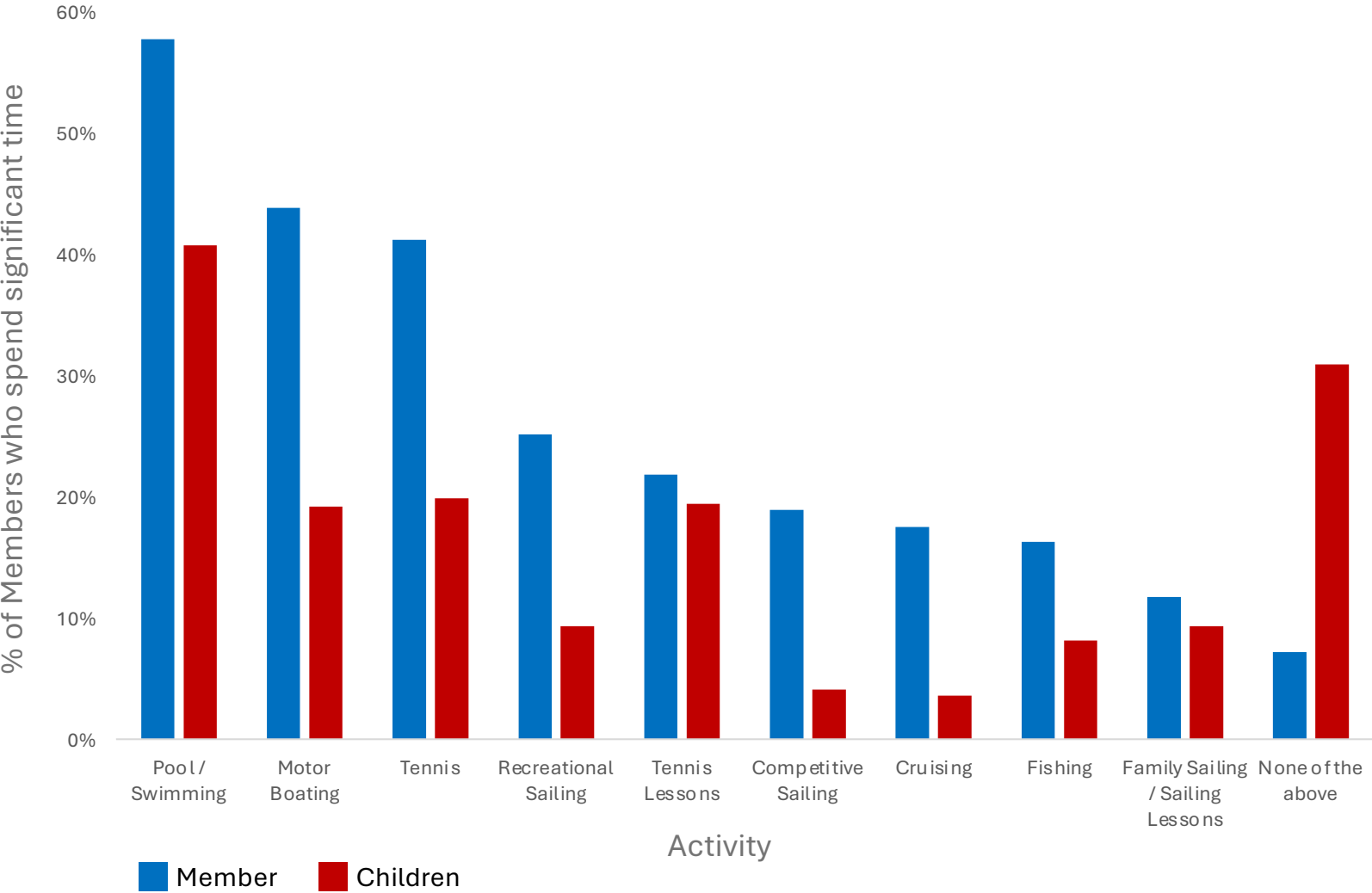
- 90% of members indicated they regularly use the Porch for Food & Beverage (and nearly 50% the Bistro)
- Insufficient waterfront seating (Porch, Bistro, etc.) was listed as the **#1 Concern** of members

*Of note: while 70%+ of responding members have a boat, many of the concerns or potential development projects associated with boating/sailing were not prioritized by members*



# The **activities** which members, and their children, most frequently engage in are **Pool/Swimming, Motor Boating, and Tennis**

In which club activities do you (and your children) spend significant time?



**Members** indicated that the club **activities** they engage with the most are:

1. Pool/Swimming
2. Motor Boating
3. Tennis

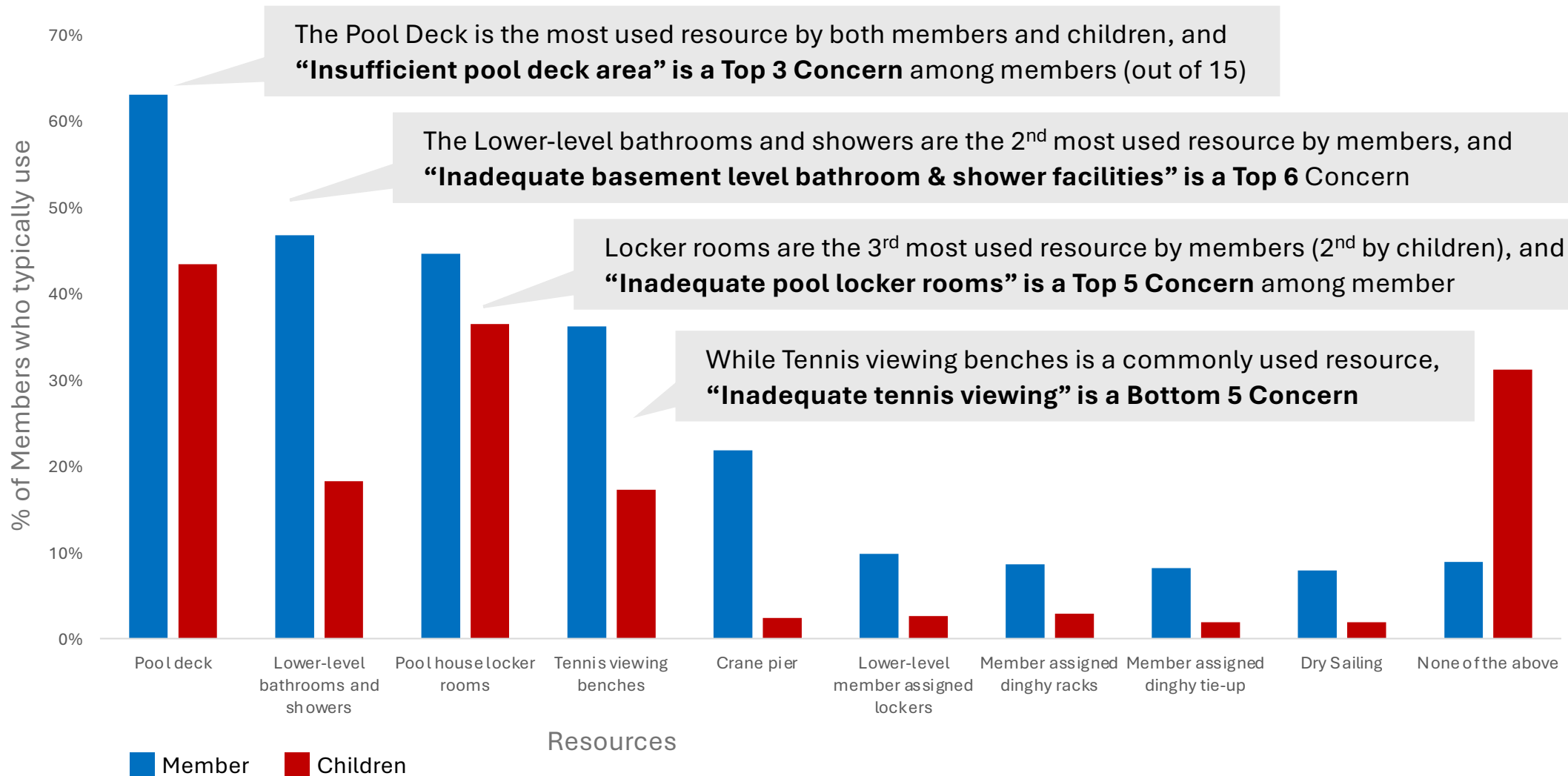
While **Children** engage most with:

1. Pool/Swimming
2. Tennis
3. Tennis Lessons



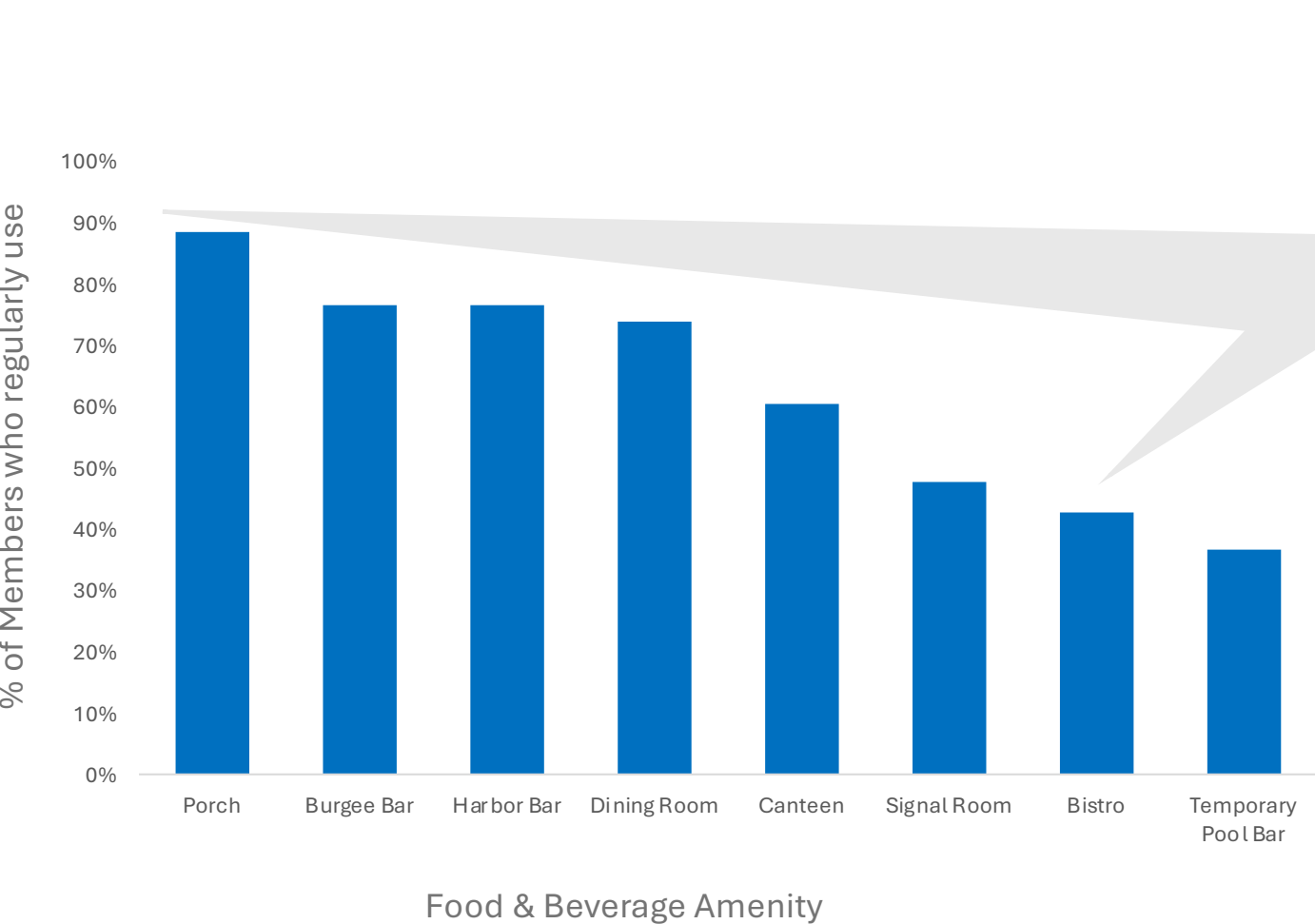
# Resources related to the pool (pool deck, locker rooms) and lower-level bathrooms & showers are the most used, and some of the largest concerns

## Which club resources do you (and your children) typically use?



# More than any other club resource or activity, though, **the Club's various Food & Beverage amenities** are used by the greatest % of members

Which food and beverage amenities do you regularly use?



While nearly 90% of members indicated they regularly use the Porch for Food & Beverage (and nearly 50% the Bistro), ***“Insufficient waterfront seating (Porch, Bistro, etc.)”*** was listed as the ***#1 Concern of members***



# The survey illuminated the **areas where membership has the greatest areas of concern**

**Please score each of the following areas of concern based on importance and severity**

1 = Not Important, 5 = Highly Important

<b>Rank</b>	<b>Concern</b>	<b>Avg Score</b>
1	Insufficient <b>waterfront seating</b> (porch, bistro, etc.)	3.7
2	Insufficient <b>parking</b>	3.6
3	Insufficient <b>pool deck</b> area	3.0
4	Inadequate <b>waterfront access</b> (crane, ramp, slips, etc.)	2.7
5	Inadequate <b>pool locker rooms</b>	2.7
6	Inadequate <b>basement level bathroom &amp; shower</b> facilities	2.6
7	Insufficient <b>tennis court capacity</b>	2.6
8	Corinthian Lane <b>traffic stoppages</b> (drop-offs, crane pier activity, etc)	2.5
9	No <b>boat ramp</b>	2.3
10	<b>Delivery trucks</b> entering parking lot against traffic during Club use hours	2.3
11	Capacity constrained <b>launching &amp; hauling</b>	2.2
12	Inadequate <b>tennis viewing</b> and amenities	2.2
13	Inadequate <b>small craft storage</b> (SUPs, kayaks, etc.)	2.1
14	Insufficient <b>dry sailing capacity</b>	2.0
15	Dry sailing <b>split between two areas</b>	1.8



# The survey also allowed membership to weigh in on their **preference for potential development projects**

## Please rank the following potential development projects

1 = Low Priority, 5 = High Priority

Rank	Concern	Avg Score
1	Increase available <b>parking</b>	3.5
2	Build the <b>Riprap Deck</b> adjacent to the bistro	3.5
3	<b>Storm Seas Mitigation</b> / Float stabilization (breakwater, water attenuating floats, floating barrier)	3.2
4	Enlarge the <b>pool deck</b>	3.1
5	Reengineer <b>traffic pattern</b>	3.0
6	Augment our <b>float system</b>	2.8
7	Rebuild the <b>pool house</b>	2.7
8	Create <b>designated drop-off</b> area	2.6
9	Add a <b>third tennis court</b>	2.6
10	Add <b>paddle ball and/or pickle ball</b> courts	2.6
11	Build a <b>sailing center</b>	2.5
12	Build a <b>tennis center</b>	2.4
13	Build a <b>boat ramp</b>	2.3
14	<b>Widen the crane pier</b>	2.2
15	Expand <b>dry sailing capacity</b>	2.1
16	<b>Consolidate dry sailing</b> into one area	2.1



